



**fDELETE** is a file and folder maintenance utility program. It has both a Graphical Interface and can also be called from the command line via a shortcut, used in a BAT file or via a call from any program. The command line is completely 'silent' and produces a log called FileDeleteLog.txt in the fDELETE program folder.

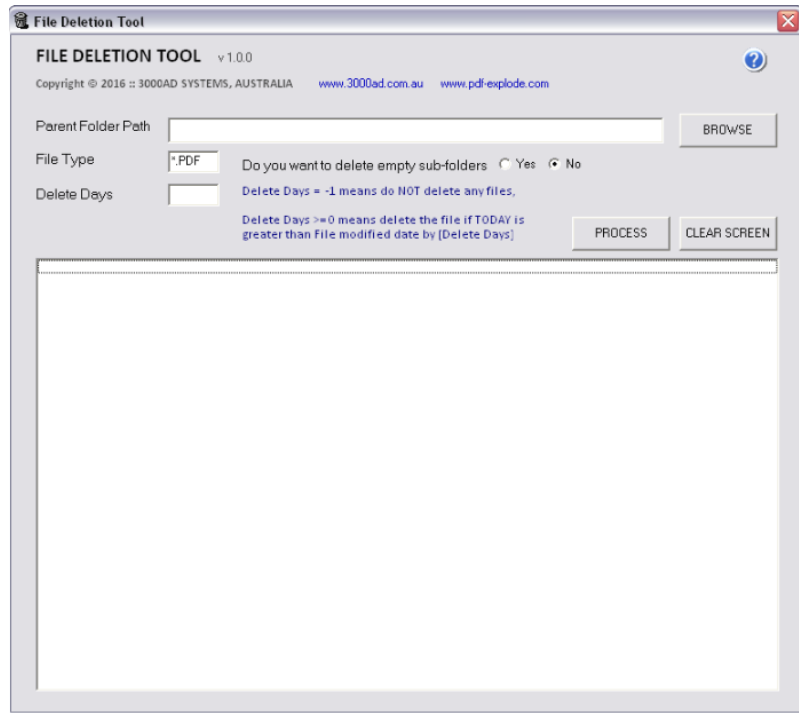
**USING THE GRAPHICAL USER INTERFACE:**

**PARENT PATH:** Insert the folder from where the Delete 'cleanup' will commence. This parent folder will not be deleted.

**FILE TYPE:** Enter the file Extension filter like '\*.PDF' or '\*' or '\*.\*' for all files. The EXTension can only be 3 chars or less

**DELETE EMPTY SUB-FOLDERS:** Only empty folders are deleted. ALL lower level sub-folder in the 'folder tree' must be empty and deleted first before the current folder is deleted too. The program is capable of emptying ('deleting') all files and then deleting each sub-folders of a given parent folder.

**DELETE DAYS:** Insert any number from 0 (for delete immediately regardless of file modified date, or a larger number (like 365 - for preserving files for ONE year). Insert '-1' is you do not wish to delete ANY files but rather want to remove all empty sub-folders under the parent folder, as long as DELETE EMPTY FOLDERS is set to Yes



**For enquiries: send an email to: [mail@3000ad.com.au](mailto:mail@3000ad.com.au)**

## USING A COMMAND LINE CALL:

The command line call has 4 parameters each separated by a comma, of which the first two are compulsory and the other 2 are optional. However, where the third and fourth parameters are not shown, they will be assigned a default which is shown below in the detail.

Call is:

**[PROGRAM PATH]\FDelete.EXE "Parent\Folder\Path", PDF-File-EXT-Filter, [Y or N for Sub-folder deletion], [File Delete Days]**

NOTE:

1. If your command line consists of no parameters, the User Interface program will be opened instead
2. If your parameters shown in the command line consist of only the folder path, the program will abort.
3. Parent Folder Path must be enclosed between double quotes if spaces exist in the path.
4. The File EXT filter can be of the format : PDF or DOC or XLS or \* or with dot as in \*.\* or \*.PDF, \*.xlsx etc.
5. If the 3rd and 4th parameters are omitted, then the following defaults will apply  
DELETE DAYS = 0, and DELETE SUB-FOLDERS = Y
6. If you want to skip File deletion and only remove the empty sub-folders, then show  
DELETE DAYS = -1

## HOW DOES DELETE DAYS WORK:

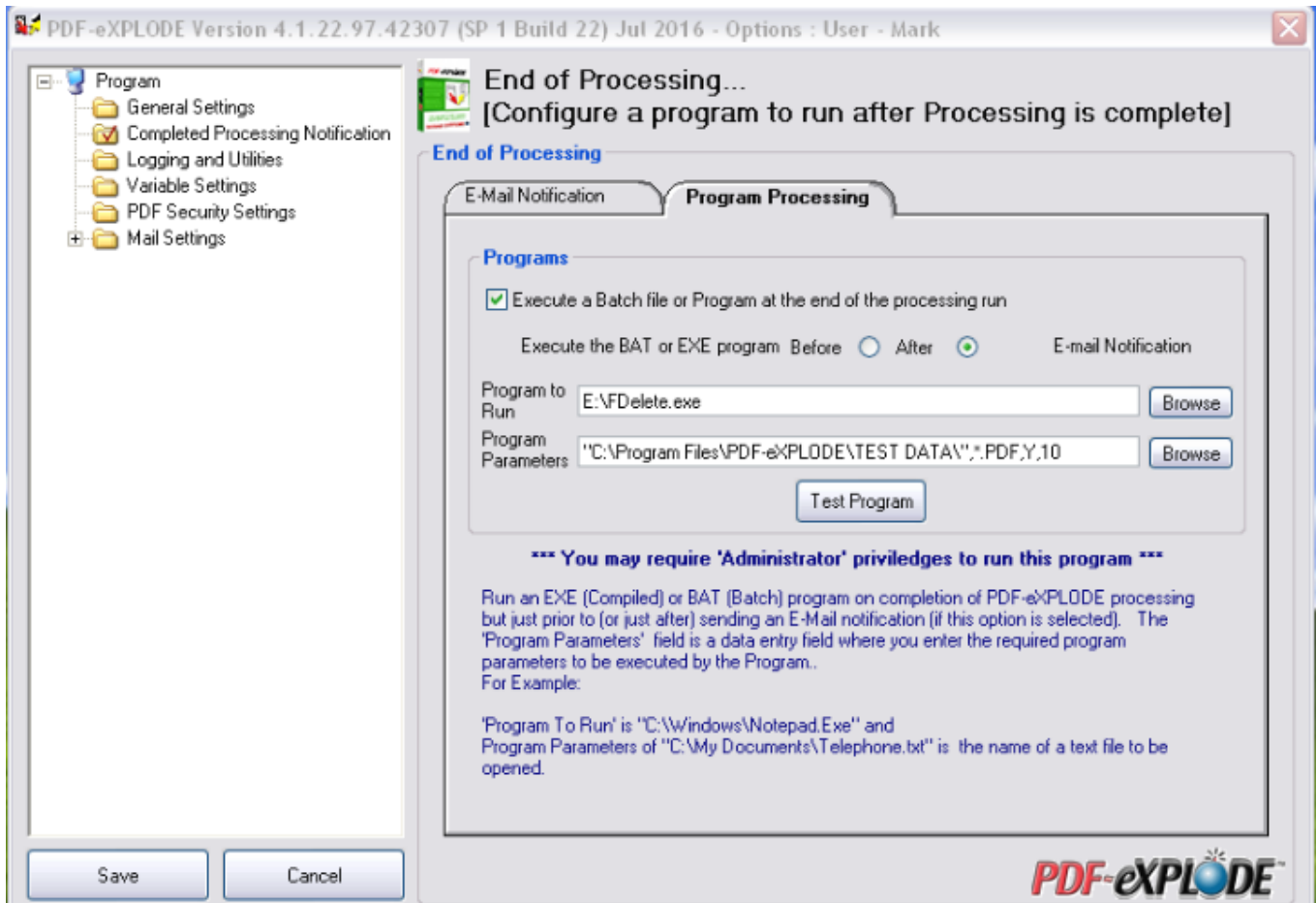
[Today's DATE] *minus* [File Modified Date] must be *Equal To or Greater Than* [Delete Days]

Example:

1. Today is 8 Aug 2016, File modified date is 10 Oct 2015, Delete Days = 365 then this file will not be deleted
2. Today is 8 Aug 2016, File modified date is 7 Jul 2015, Delete Days = 365 then this file will be deleted
3. Today is 8 Aug 2016, File modified date is 8 Aug 2016, Delete Days = 0 then this file will be deleted

***For enquiries: send an email to: [mail@3000ad.com.au](mailto:mail@3000ad.com.au)***

## HOW TO USE *f*DELETE WITH PDF-eXPLODE:



### Program Parameters:

- 1<sup>st</sup> parameter: Parent Path with double quotes as the path has spaces
- 2<sup>nd</sup> parameter: \*.PDF – File Filter for files of type PDF to be deleted
- 3<sup>rd</sup> parameter: Y – to indicate Delete sub-folders where empty
- 4<sup>th</sup> parameter: 10 to indicate delete file if file modified date is 10 days older than today

***For enquiries: send an email to: [mail@3000ad.com.au](mailto:mail@3000ad.com.au)***